

# THE INMATES of ILLINOIS WOMEN'S PRISON CHICAGO

The famous musical by Kander & Ebb and Fosse  
About stuff that Dallas Watkins lady really reported on

Velma - Phoenix  
Roxie - Angelina  
Billy - Kristina  
Amos - Lil Janet  
Mama - La Jefe  
Sunshine - Sister Soto  
Liz - Raven  
Annie - Martinez  
June - Mclure  
Hunyak - Rose  
Mona - Robbin  
Kitty - Fresh Meat  
Casely - Hubbs  
Fogarty and Judge - Tatas  
Harrison - Misty S.  
Aaron - M.J.  
Harry / Dr - Doc

Piano - Black Widow

Hubbard and Rodriguez, thanks for getting and working the spotlights. And the rest of electrical too.

Thanks for everybody helping with props  
and making dances.  
Grounds crew got good materials for the set.

We appreciate getting to do something fun  
everybody worked so hard for.

Major props to Sam French company  
for letting us do the show.



# CHICAGO

THE MUSICAL

Book by Fred Ebb and Bob Fosse  
Music by John Kander  
Lyrics by Fred Ebb  
Script Adaptation by David Thompson  
Based on the Play *Chicago* by Maurine Dallas Watkins  
"Chicago" is presented by special arrangement with SAMUEL FRENCH, INC.

Direction / Musical Direction by Justin Lucero\*  
Musical Direction / Direction by Megan McQueen  
Choreography by Karlos Saucedo  
Costumes, Makeup & Hair by Guenevere McMahon  
Piano Accompaniment by Ginny May

\*Denotes associate membership of SDCF, Stage Directors and Choreographers Foundation, a national theatrical labor union

## MUSICAL NUMBERS

### ACT ONE

AND ALL THAT JAZZ.....Velma, Ensemble  
FUNNY HONEY.....Roxie  
CELL BLOCK TANGO.....Liz, Annie, June, Hunyak, Velma, Mona  
WHEN YOU'RE GOOD TO MAMA.....Matron Mama Morton  
ALL I CARE ABOUT.....Billy Flynn, Ensemble Women  
A LITTLE BIT OF GOOD.....Mary Sunshine  
WE BOTH REACHED FOR THE GUN.....Billy, Roxie, Mary Sunshine, Ensemble  
ROXIE.....Roxie, Ensemble Men  
I CAN'T DO IT ALONE.....Velma  
MY OWN BEST FRIEND.....Roxie, Velma

*There will be a 15-minute intermission between acts.*

### ACT TWO

I KNOW A GIRL.....Velma  
ME AND MY BABY.....Roxie, Her Babies  
MISTER CELLOPHANE.....Amos  
WHEN VELMA TAKES THE STAND.....Velma, Ensemble Men  
RAZZLE DAZZLE.....Billy, Ensemble  
COURTROOM SEQUENCE.....Company  
CLASS.....Velma, Matron Mama Morton  
NOWADAYS.....Roxie, Velma  
HOT HONEY RAG.....Company

## PERFORMER BIOGRAPHIES



**Nicole Bartlett (Velma Kelly)** is a spring 2015 graduate of NMSU Theatre Arts, for whom she has played the Blue Girl in *SHOUT!*, Magenta in *Rocky Horror*, Mrs. Cratchit in *A Christmas Carol*, and the title role in *The Mystery of Edwin Drod*. Nicole also appeared in lo-fi's *Venus in Fur* and Las Cruces Community Theatre's *Best Little Whorehouse...* and *The Full Monty*. "I'm thrilled to play Velma and I've had an incredible time working with Scaffolding!" Her future plans include traveling and working as an actress.



**Lydia Caroe (Go-to-Hell Kitty / Female Ensemble)** is a rising senior at Alma d'arte Charter High School. She thoroughly enjoys the theatre and has been performing for several years. Some of her favorite roles were the title role in *Annie*, Snoopy in *You're a Good Man Charlie Brown*, and Marian in *The Music Man*. When she is not performing she is dancing and choreographing, including the choreography in No Strings Theatre Company's current *Arabian Nights*. "Thanks to my amazing family!"



**Laura Mae Dille (Harrison / Male Ensemble)** is entering her senior year as a dance major at NMSU with a concentration in contemporary dance and a minor in Spanish dance. After wonderful experiences in the Las Cruces Symphony accompanied *Carousel* and *Annie Get Your Gun*, she is excited to pursue a career dancing in musicals once she finishes with school. "I can't think of a better way to spend my time than getting to sing and dance!"



**Rachel Edwards (Mona / Female Ensemble)** just graduated from NMSU with a BA in Theatre Arts. Most recently, she appeared on this stage as Brooke in *Other Desert Cities* and in the ensemble of *The Mystery of Edwin Drod*. "Being a tiny part of all that is *Chicago* has been an incredible experience. Here's to my fellow cast members for all the hard work we've put into this production! Razzle Dazzle 'em!"



**Marissa Hernandez (Aaron / Male Ensemble)** is excited to part of *Chicago*! While earning a degree in music education from the University of Texas El Paso, Marissa performed as the stepsister in *Into the Woods* and with the El Paso Opera chorus in *La Boheme*, *Opera for All* and *Madame Butterfly*. She is now a choir director for Ysleta Independent School District in El Paso. "Thanks to Justin and Megan for this wonderful opportunity, and to my family and friends for their continued love and support!"



**Nichole Holguin (Liz / Male & Female Ensemble)** was in *Les Miserables*, *Into the Woods*, *Little Shop of Horrors*, *High School Musical*, and more while at Oate High School, and then focused on kinesiology for a few years. As a senior at NMSU she recently became a theatre arts major, returning to the stage with *Broadway Today* and *The Mystery of Edwin Drod*. "As an advocate for musical theater in the community, it's an honor to work with Scaffolding and such a fun and talented cast!"



**Ginny May (Pianist)**, a native cornhusker, has played piano for over 60 years. Locally that includes many Boba Cabaret revues directed by Megan McQueen and most recently *The Mystery of Edwin Drod*. In August she made her acting debut as retired piano player Jeannette in LCCT's *The Full Monty*, while also playing for the production. When not playing piano, Ginny loves to play competitive USTA tennis, cooking and entertaining, traveling with hubby Louie, and volunteering in the community. "I'm thrilled to tinkle the ivories, and work with Megan, Justin, this fabulous cast, and outstanding choreographer Karlos!"



**Valerie Mirelez (Little Mary Sunshine)** recently completed an undergraduate degree in vocal performance at NMSU. She has previously sung with the Franco-American Vocal Academy in Perigueux, France and in *Orpheus in the Underworld*, *Dido and Aeneas*, *Die Fledermaus*, *Elixir of Love*, and *From Berlin to Broadway* with the Doña Ana Lyric Opera. "I'm grateful for this opportunity to work with such creative, willing professionals. Thanks to the cast and directors for a uniquely fun and challenging project."



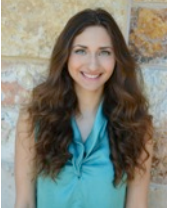
**Montaeya M. Moore (Sgt. Fogarty / Judge / Male Ensemble)** is from Los Angeles. She found her love in Theatre in 2005, but didn't get her first real chance at theatre until 2013. Montaeya has been in a few revues, plays, and musicals here at NMSU, and recently appeared in LCCT's *The Full Monty*. "Thanks to Megan McQueen for believing in my ability to do musical theatre, and to my mom and sister for always being there when I needed a shoulder to cry on." Montaeya graduated NMSU with a theatre major and a minor in family and child science.



**Victoria Hope Padilla-Villanueva (Hunyak / Female Ensemble)** is a sophomore theatre arts major at NMSU and a member of Alpha Xi Delta. Originally from Southern California, her love of theatre began in the High Desert Community Theatre Company. She hopes to continue her education and pursue a career in acting.



**Cindy Pitts (Fred Casely / Male Ensemble)** was last seen on stage in LCCT's *White Christmas* where she's also performed in *Bells are Ringing*; *Gypsy*; *I Love You, You're Perfect Now*, *Change*; *You're a Good Man, Charlie Brown*; and more. For NSTC she played Marcy in *...Spelling Bee*. She is excited to be back performing with such an amazingly talented group! "Megan and Justin, your creative minds together can conquer the world of musical theatre! To My Heart: to the moon, beyond and back. Enjoy the show!"



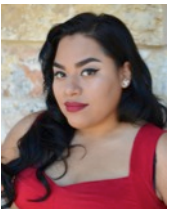
**Taylor Rey (Roxie Hart)** is a junior musical theatre major at Oklahoma City University. While attending Las Cruces High School until 2013, Taylor performed *Little Shop of Horrors* and *Cinderella* for school, in *Best Little Whorehouse in Texas*, *White Christmas*, and *Dames at Sea* for LCCT, and *Twitch* for NSTC. She appeared in Scaffolding's *Nine* last summer. Regional theatre credits include: *Grapes of Wrath* with Oklahoma City Repertory Theatre.



**David Reyes (Amos Hart)** is thrilled to be working with Scaffolding! He's been in too many musicals to count, so locally some will remember him from NSTC performances as the Baker in *Into the Woods*, Arles and others in *Greater Tuna* and *A Tuna Christmas*, or Scott in *Terra Nova*, or as Sancho in LCCT's *Man of La Mancha*. David is a proud dad of three awesome kids and a wonderful wife! "This show is for my parents who are in town visiting from Kansas City."



**Robert Sciortino (Billy Flynn)** is a junior theatre arts major at NMSU. He has been featured in several ASTC productions including as Aunt Sponge in *James and the Giant Peach*, Clitandre in *The Misanthrope*, Nick Cricker / Deputy in *The Mystery of Edwin Drood*, and Malvolio in *Twelfth Night*. "I've enjoyed working with this amazingly talented cast and team. I hope you enjoy the production!"



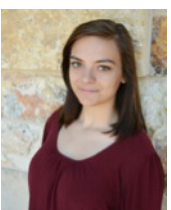
**Marybeth Torres (Matron Mama Morton)** is a junior at NMSU majoring in education with a specialization in bilingual studies and math. Singing has been a passion since age five in church, but this is her first play. She's always loved musicals and theatre. "Thanks, mom, for introducing me to the music of Aretha Franklin, Billie Holiday, and Etta James, and to my theatre department friends, without whom I'd never have dared to try out!"



**Doris Velez (Annie / Female Ensemble)** is thrilled to be a part of Scaffolding's *Chicago!* A native El Pasoan, she has most recently played Wendla in *Spring Awakening* and Kate Monster in *Avenue Q* for El Paso Performers Studio, and Violet in *9 to 5* and Elsa in *The Sound of Music* for University of Texas El Paso Dinner Theatre. "Thank you to Megan, Justin, and the cast and crew for the opportunity to be a part of something so special. Dedicated to my family and friends- TQM! 'Le Papaya, it looks like rain.'"



**Alex Wheeler (June / Female & Male Ensemble)** is a senior theatre major at NMSU where she has been in *The Mystery of Edwin Drood* and a High Desert reading of *For the Falls*. She has appeared on Las Cruces stages since she was the littlest munchkin in DALO's *Wizard of Oz*, including numerous roles with lo-fi and at Alma d'arte. "I'm very excited to be involved in my first Scaffolding production. Thanks to my mom and boyfriend!"



**Melis White (Harry / Doctor / Male Ensemble)** is an incoming freshman music education major at NMSU. This is her first community production, and she is excited to debut with Scaffolding. Melis was previously on this stage in *Broadway Today* and performed with DALO in *Amahl and the Night Visitors*. "Thanks to this wonderful cast, crew, and directors for this opportunity! I hope you enjoy our efforts!"

## CREATIVE TEAM BIOGRAPHIES

**Justin Lucero (Scaffolding Co-Founder & CHICAGO Director/Musical Director)** trained in London, earning an MFA in Theatre Directing from East 15 Acting School. As a professional freelancer his experience includes such local companies as El Paso Opera, UTEP Dinner Theater, *Viva! El Paso*, and Opera UTEP; London's Theatre 503, Jermyn Street Theatre, Blue Elephant Theatre and the West End's Regents Park Open Air Theatre; and the first-ever opera produced in Bhutan. He is the recipient of a Directing Fellowship with Florida's Asolo Repertory Theatre and an SDCF Observership with L.A.'s South Coast Repertory. "Thanks so much to everyone involved in making this a magical experience. For my family."

**Megan McQueen (Scaffolding Co-Founder & CHICAGO Musical Director/Director)** joined the faculty of NMSU's Department of Theatre Arts in the fall of 2013 where she teaches THTR 101 and acting for non-majors, as well as musical theatre. She has performed 20 musical theatre roles for companies in New Mexico, Texas, Pennsylvania and Massachusetts. Favorites include Fosca in the regional premiere of *Passion* in 1996 (a role she will be portraying in Scaffolding's next production), Anna in *The King and I* for UTEP Dinner Theatre, the Witch in *Into the Woods* for DALO, and Luisa in Scaffolding's *Nine*. She has produced and/or directed over 40 musicals, plays, and revues in Las Cruces, many during her nine years of teaching music and theatre first at Alma d'arte Charter High School and then Centennial High School. "Thank you to an overwhelming generous and flexible cast, crew, and creatives. You are inspiring."

**Karlos Saucedo (Choreographer)**, an Alma d' Arte graduate, has performed in numerous musicals including *Hank*, *Once Upon a Mattress*, *Man of La Mancha*, and *Full Monty*. He choreographed for Centennial High School's 2012-2013 dance classes, several NMSU musical theatre class revues in 2014 and 2015, LCCT's *Full Monty*, DALO's *From Berlin to Broadway*, and Scaffolding's *Nine*. He performs mariachi music any chance he gets. "Thank you to this awesome cast. This is for my angel brother who watches all I do from heaven."

**Guenevere McMahon (Costumes, Makeup & Hair Designer)** is Costume Designer and Costume Shop Manager for the NMSU Theatre Arts Department. She has designed *Shout! The Mod Musical*, *James & the Giant Peach* and *The Mystery of Edwin Drood* for ASTC/NMSU, as well as *The House of Blue Leaves* in 2014 at The Black Box Theater. Working with Megan and Justin has been an incredibly rewarding and strangely relaxing experience, as well as being tremendously collaborative and fun. The cast has been gracious, professional and flexible throughout the process, which is priceless. Guenevere was assisted by her son, Cormac McMahon, and couldn't have done it without the help received from Cameron Lang, Victoria Hope Padilla-Villanueva and Nicole Bartlett.

## PRODUCTION STAFF

Lighting Designer.....Sam Tyson  
Stage Manager.....MeganBob Butler  
Assistant Stage Manager/Light Board Operator.....Judy Alexander  
Spotlight Operators.....Lisa Chavarria, Shaunia Grant  
Box Office Manager.....Brian Hancock  
Ushers/Prison Guards.....Karlos Saucedo, Brandon Brown, Lennie Brown, Mike Cook  
Production Photographer.....Justice Prude  
Technical Director, Theatre Manager, Lighting Plot Designer.....Matt Reynolds  
Production Assistants.....Cameron Lang, Aylin White  
Co-Producer.....Dr. William Storm/NMSU Theatre Arts

## New Mexico State University Department of Theatre Arts FACULTY & STAFF / RESIDENT COMPANY

Interim Department Head, Managing Director & Professor.....Dr. William Storm  
Faculty.....Tom Smith, Josh Chenard, Larissa Lury, Claudia Billings, Megan McQueen  
Professional Staff.....Jim Billings, David Hereford, Guenevere McMahon,  
.....Mike Wise, Deborah Brunson, Jim Jaworski, Matt Reynolds  
Administrative Support Personnel.....Tiffini Reimann, Cumy Gower

## SCAFFOLDING THEATRE COMPANY *Foundation* DONORS

(Permanent Company Patrons)

Mike Cook                      Judy Groves                      Caryl Kotulak  
Connie Lee                      Bruce & Sharon Leising                      Justin Lucero  
Guenevere & Charles McMahon                      Megan McQueen & Matthew Reiter  
Christa Slaton                      William & Deborah Storm

### A SPECIAL THANK YOU TO...

Matt Reiter, Janet McQueen, Joe & Shirley Lucero  
(for day-to-day support, love, patience and so much more!)

Gail Zimmer & Tiffini Reimann (for general helpfulness)

Cormac McMahon, Nicole Bartlett, Victoria Hope Padilla-Villanueva,  
Alex Wheeler, and Montaeya Moore (for props, costumes, & hair assistance)

Alameda Elementary (who loaned folding chairs)

Las Cruces Winnelson (who generously provided PVC and fittings)

---

**COME SEE OUR NEXT PRODUCTION LATER THIS SUMMER**

---



*Performance Dates:*

**Friday, August 21, 7:30pm**  
**Saturday, August 22, 7:30pm**  
**Sunday, August 23, 3:00pm**

Book by James Lapine  
Music & Lyrics by Stephen Sondheim  
Based on the Film *Passione d'Amore* directed by Ettore Scola

Direction by Justin Lucero  
Piano Accompaniment by David Cunniff  
Starring: Isaac Quiroga, Megan McQueen, Amanda Bradford

a Scaffolding Theatre Company & Doña Ana Arts Council Co-production



**For more information, including how to make a financial contribution,  
please visit [facebook.com/ScaffoldingTheatreCompany](https://www.facebook.com/ScaffoldingTheatreCompany)  
or [daarts.org/sponsorship-opportunities](https://www.daarts.org/sponsorship-opportunities)**

*PASSION* is presented through special arrangement with Music Theatre International (MTI).